


## Commune de LICQ-ATHEREY

## Plan de Prévention des Risques naturels prévisibles (P.P.R.)



1 X NUMERO DE ZONE/INDICE DE REGLEMENT APPLICABLE

### ZONES DIRECTEMENT EXPOSEES AUX RISQUES

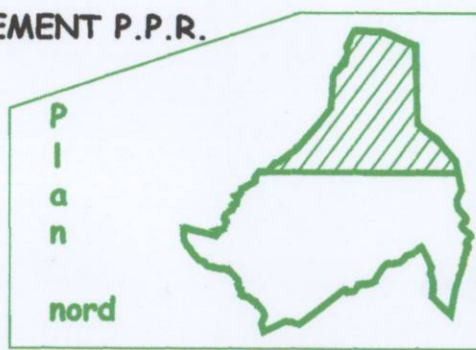
 ZONES INCONSTRUCTIBLES

### ZONES CONSTRUCTIBLES SOUS CONDITIONS

### ZONES NON DIRECTEMENT EXPOSEES AUX RISQUES

ZONES SANS RISQUE PREVISIBLE

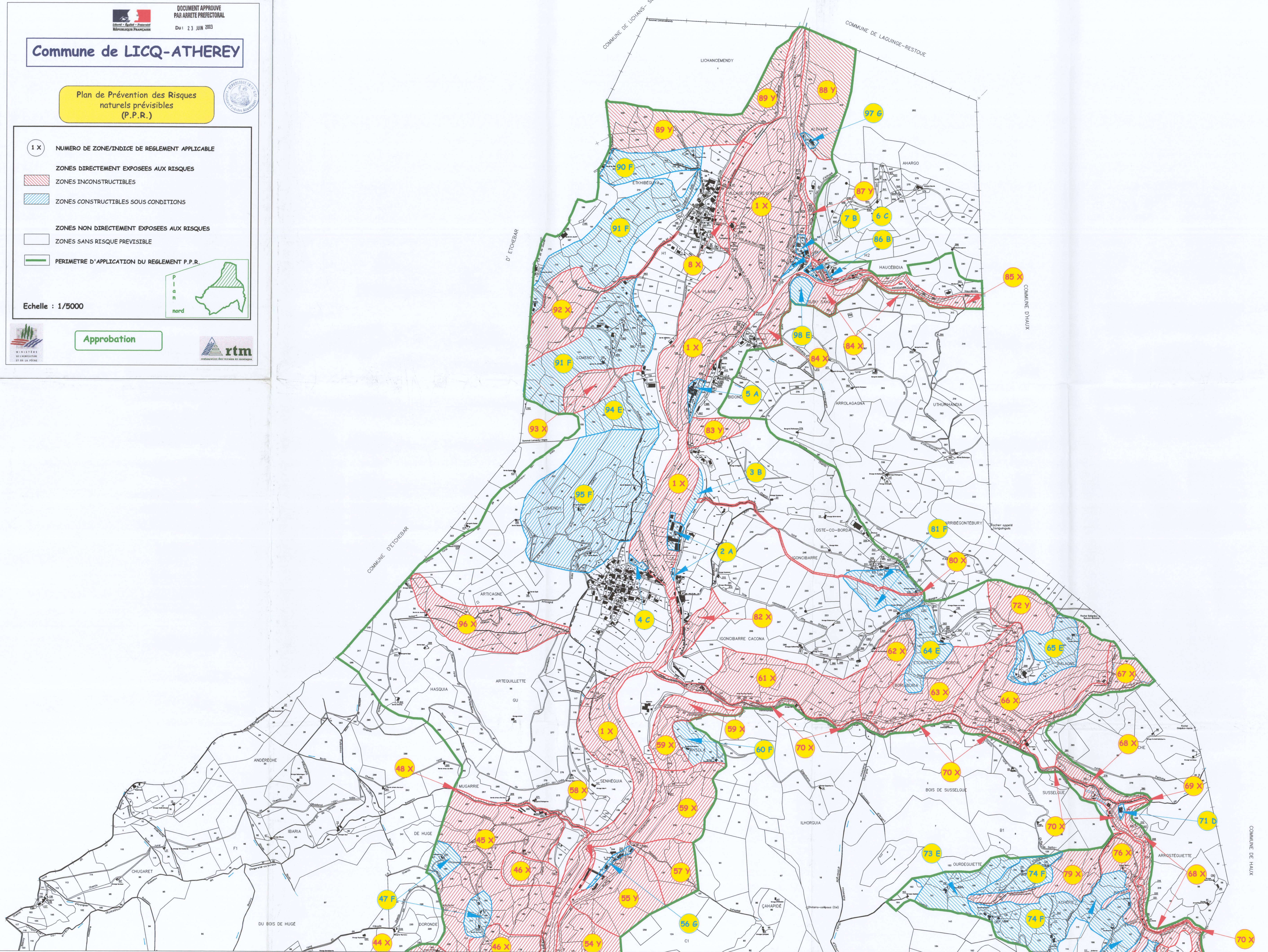
PERIMETRE D'APPLICATION DU REGLEMENT P.P.R.

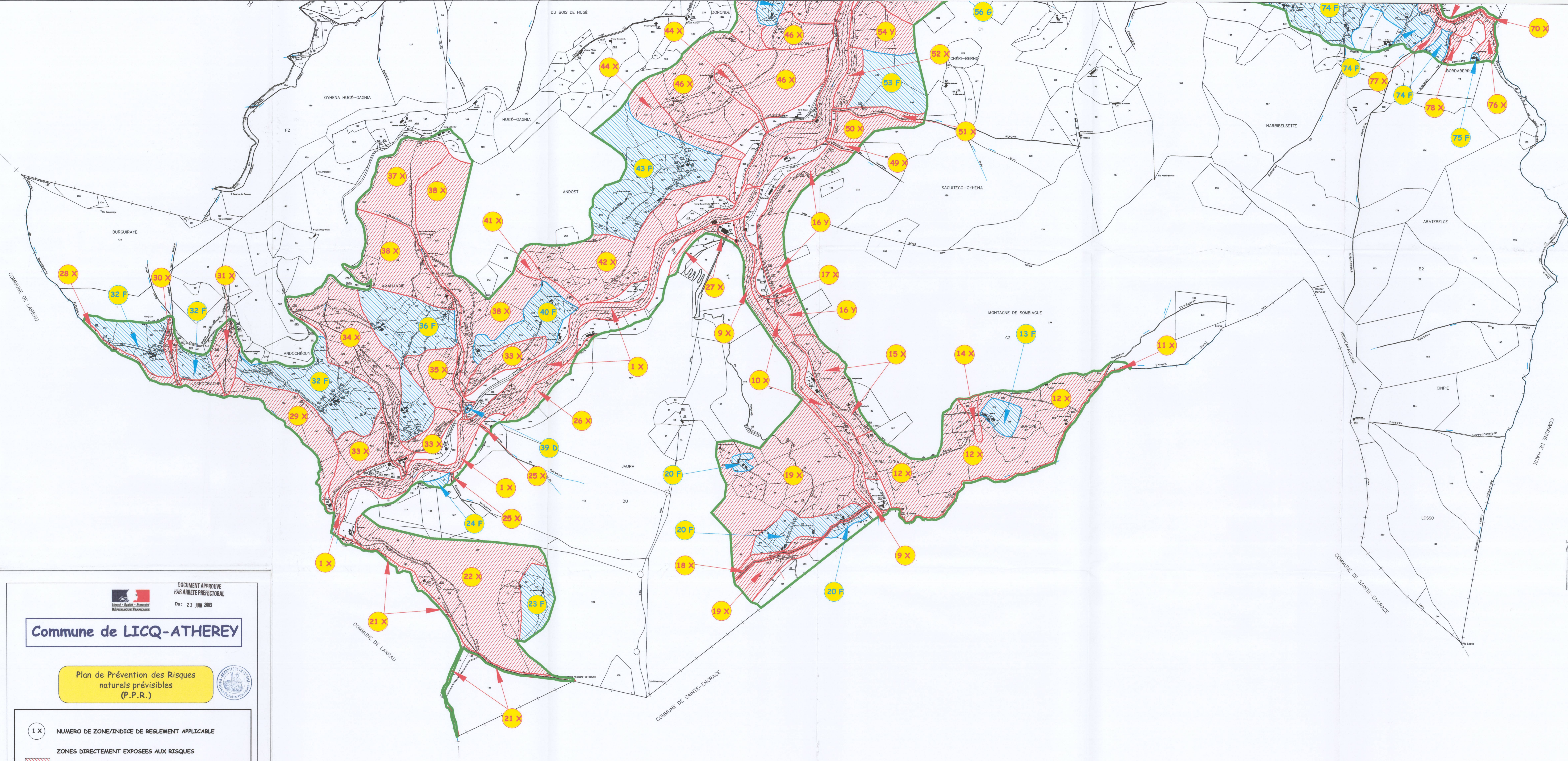



Echelle : 1/5000



## Approbation








DOCUMENT APPROUVE  
PAR ARRETE PREFECTORAL  
Du : 23 JUIN 2003

## Commune de LICQ-ATHEREY

Plan de Prévention des Risques  
naturels prévisibles  
(P.P.R.)



1 X NUMERO DE ZONE/INDICE DE REGLEMENT APPLICABLE

ZONES DIRECTEMENT EXPOSEES AUX RISQUES

ZONES INCONSTRUCTIBLES

ZONES CONSTRUCTIBLES SOUS CONDITIONS


ZONES NON DIRECTEMENT EXPOSEES AUX RISQUES


ZONES SANS RISQUE PREVISIBLE

PERIMETRE D'APPLICATION DU REGLEMENT P.P.R.

Echelle : 1/5000


Plan sud





Ministère de l'Environnement

Approbation



rtm